

TRAVERSE T944X

PETTIBONE

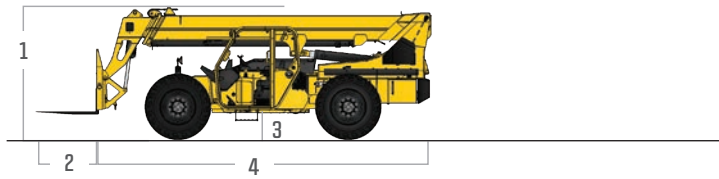
T944X TRAVERSE

The Pettibone® Traverse™ T944X is the only new telehandler on the market today that features an extendable, traversing boom that moves loads by traveling horizontally. Providing up to 70 inches of horizontal boom transfer, the Traverse allows users to precisely place loads at full lift height without having to coordinate multiple boom functions.

X-SERIES



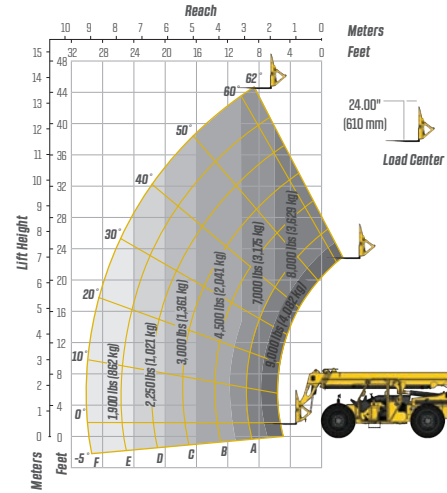
SPECIFICATIONS



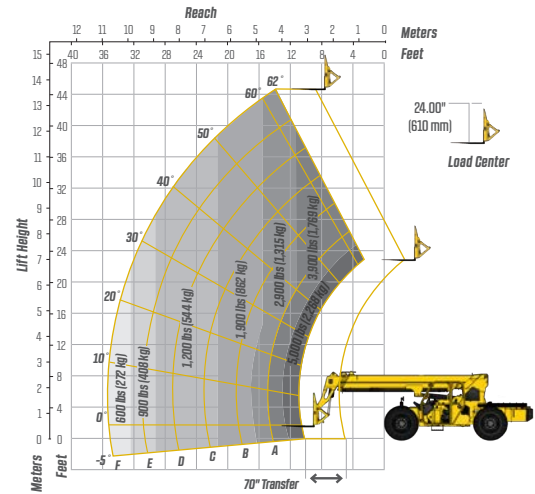
DIMENSIONS		
1	Overall Height	8' 3" (243 cm) boom down
2	Fork Carriage	48" (122 cm) standard
3	Ground Clearance	18" (46 cm)
4	Overall Length	22' (671 cm) to fork frame
	Overall Width	8' 6" (259 cm)
	Pallet Forks	2.25x4x48" standard
	Approximate Operating Weight	22,500 lbs (10,206 kg)
ENGINE		
	Model/Power	74 HP (55 kW) Cummins® Tier 4 turbo diesel with DOC muffler
	Fuel Tank	30 gal. (114 L)
HYDRAULICS		
	System	Pressure comp, axial piston pump
	Features	Fully proportional functions, auxiliary boom tip hydraulics, quick disconnect for attachments
	Controls	Single joystick, pilot operated
PERFORMANCE		
	Max Load Capacity	9,000 lbs (4,082 kg)
	Maximum Lift Height	44' 6" (1,356 cm)
	Landing Height	44' (1,341 cm)
	Maximum Forward Reach	35' 10" (1,092 cm) at 24" LC 30' (914 cm) non-traversed
	Below Grade Reach	3' (92 cm)
	Maximum Travel Speed	15.2 mph (24.5 km/h)
	Turning Radius	14' 1" (429 cm)
	Drawbar Pull (GVW)	22,050 lbs (10,002 kg)
	Frame	24° of leveling (12° right and left), rear axle stabilization system
	Transmission	Dana® VDT12000 Series, 3-speed Powershift, forward & reverse
	Axles	Dana 212 Series: 4-wheel drive, 45% limited slip front differential
	Steering	4 wheel, 2 wheel, and crab steer
	Brakes	Oil-immersed inboard disc service brakes, integral front SAHR park brake
	Tires	13.00 x 24, 16 ply, G2 tread air-fill standard
	Boom	3-section, slide pad; automatic fork leveling without slave cylinder

LIFT PERFORMANCE

Standard Fork Frame
(Carriage Retracted)



Standard Fork Frame
(Carriage Forward)



FEATURES & OPTIONS

OPERATOR CAB

Adjustable suspension seat with seat belt
Single multifunction hydraulic joystick
Analog/LCD gauge cluster

Split door design
Flat, bolt-in glass
Lockable storage area under seat

AVAILABLE ATTACHMENTS

Pallet, lumber or block forks
Utility bucket
Side tilt carriage (+/- 10°)
Truss boom

Standard carriage
Side-swing carriage (+/- 60°)
Hydraulic fork positioning carriage

OPTIONS

Premium gauge cluster w/7" digital display
Rear-view camera system
High output LED lighting package
Solid or foam filled tires
Various tire tread options available

Enclosed cab, HWD (A/C available)
117 HP Cummins diesel engine w/SCR & DEF
Sling hook
Electrical to boom tip
Bolt-on rear pintle hitch

* Specifications are subject to change.

PETTIBONE®

PETTIBONE, LLC

1100 Superior Avenue
Baraga, MI 49908

P: 800.467.3884
info@gopettibone.com
www.gopettibone.com

**1 - 2 - 3
WARRANTY**

1 Year

Full machine and attachment

2 Years

Powertrain and major hydraulic components

3 Years

Machine structure

WARRANTY