

**TRAVERSE T1258X**

**PETTIBONE**

# T1258X TRAVERSE

The Traverse™ T1258X is the farthest-reaching telehandler in the Pettibone® lineup. Featuring a unique traversing boom that moves loads by traveling horizontally, the Traverse provides up to 70 inches of horizontal boom transfer, allowing users to precisely place loads at full lift height without having to coordinate multiple boom functions.

**X-SERIES**



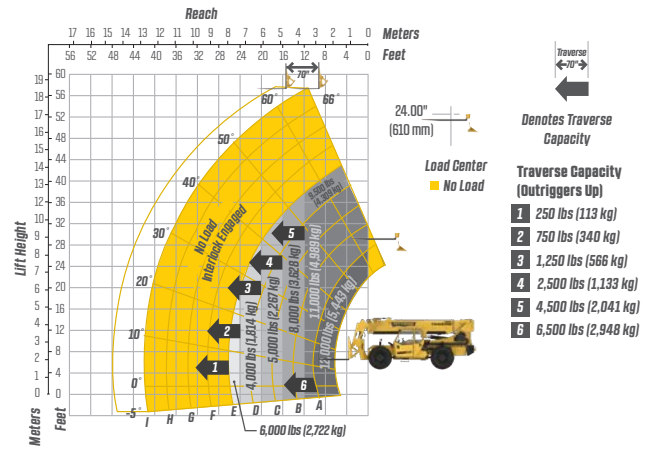
# PRELIMINARY SPECIFICATIONS



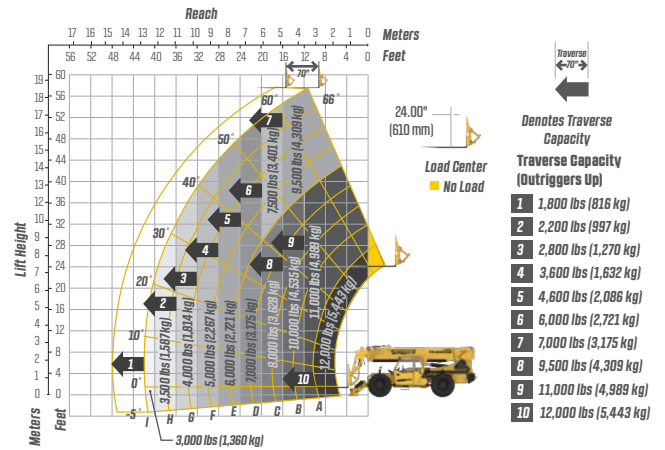
DIMENSIONS		
1	Overall Height	9' (274 cm) boom down
2	Fork Carriage	48" (122 cm) standard
3	Ground Clearance	19" (48 cm)
4	Overall Length	22' 11" (699 cm) to fork frame
	Overall Width	8' 6" (259 cm)
	Pallet Forks	2.25x4x48" standard
	Approximate Operating Weight	32,500 lbs (14,742 kg) with outriggers
ENGINE		
	Model/Power	117 HP (87 kW) Cummins® QSJ3.8 Tier 4 turbo diesel with DEF and SCR aftertreatment
	DEF Tank	5 gal. (19 L)
	Fuel Tank	30 gal. (114 L)
HYDRAULICS		
	System	Pressure comp, axial piston pump
	Features	Fully proportional functions, auxiliary boom tip hydraulics, quick disconnect for attachments
	Controls	Single joystick, pilot operated
PERFORMANCE		
	Max Load Capacity	12,000 lbs (5,443 kg)
	Maximum Lift Height	58' 6" (1,783 cm)
	Landing Height	58' 6" (1,783 cm)
	Maximum Forward Reach	47' 10" (1,458 cm) traversed 42' (1,280 cm) non-traversed
	Below Grade Reach	3' 2" (97 cm)
	Maximum Travel Speed	15.2 mph (24.5 km/h)
	Turning Radius	14' 4" (437 cm)
	Drawbar Pull (GVW)	31,800 lbs (14,424 kg)
	Frame	24° of leveling (12° right and left), rear axle stabilization system
	Transmission	Dana® VDT12000 Series, 3-speed Powershift, forward & reverse
	Axles	Dana 223 Series: 4-wheel drive, 45% limited slip front differential
	Steering	4 wheel, 2 wheel, and crab steer
	Brakes	Oil-immersed inboard disc service brakes, integral front SAHR park brake
	Tires	14.00 x 24, 16 ply, G2 tread air-fill standard
	Boom	4-section, slide pad; automatic fork leveling without slave cylinder

# PRELIMINARY LIFT PERFORMANCE

Standard Fork Frame (Outriggers Up)



Standard Fork Frame (Outriggers Down)



# FEATURES & OPTIONS

## OPERATOR CAB

Adjustable suspension seat with seat belt  
Single multifunction hydraulic joystick  
Analog/LCD gauge cluster

Split door design  
Flat, bolt-in glass  
Lockable storage area under seat

## AVAILABLE ATTACHMENTS

Pallet, lumber or block forks  
Utility bucket  
Side tilt carriage (+/- 10°)  
Truss boom

Standard carriage  
Side-swing carriage (+/- 60°)  
Hydraulic fork positioning carriage  
10' tower w/ standard carriage

## OPTIONS

Premium gauge cluster w/7" digital display  
Rear-view camera system  
High output LED lighting package  
Solid or foam filled tires  
Various tire tread options available

Enclosed cab, HWD (A/C available)  
Sling hook  
Electrical to boom tip  
Bolt-on rear pintle hitch

\* Specifications are subject to change.

**PETTIBONE®**

## PETTIBONE, LLC

1100 Superior Avenue  
Baraga, MI 49908

P: 800.467.3884  
info@gopettibone.com  
www.gopettibone.com

**1 - 2 - 3  
WARRANTY**

**1 Year**

Full machine and attachment

**2 Years**

Powertrain and major hydraulic components

**3 Years**

Machine structure

# WARRANTY