

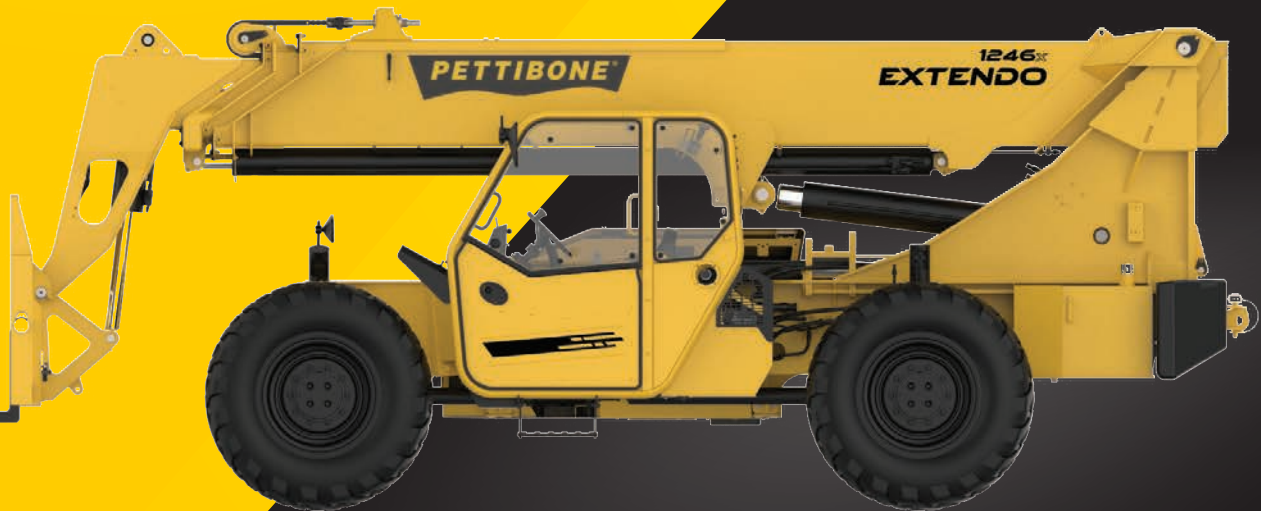
EXTENDO 1246^X

PETTIBONE

1246^X **EXTENDO**

The Pettibone® Extendo 1246X is a true material handling workhorse, delivering an impressive maximum load capacity of 12,000 pounds. Equipped with efficient hydraulics that provide exceptional cycle times and controllability, the Extendo 1246X offers superior longevity and optimal performance on a wide array of applications.

X-SERIES



PRELIMINARY SPECIFICATIONS



DIMENSIONS

1	Overall Height	9' (274 cm) boom down
2	Fork Carriage	48" (122 cm) standard
3	Ground Clearance	19" (48 cm)
4	Overall Length	22' 11" (699 cm) to fork frame
	Overall Width	8' 6" (259 cm)
	Pallet Forks	2.25x4x48" standard
	Approximate Operating Weight	29,250 lbs (13,268 kg) without outriggers 30,750 lbs (13,948 kg) with outriggers

ENGINE

Model/Power	117 HP (87 kW) Cummins® QSF3.8 Tier 4 turbo diesel with DEF and SCR aftertreatment
DEF Tank	5 gal. (19 L)
Fuel Tank	30 gal. (114 L)

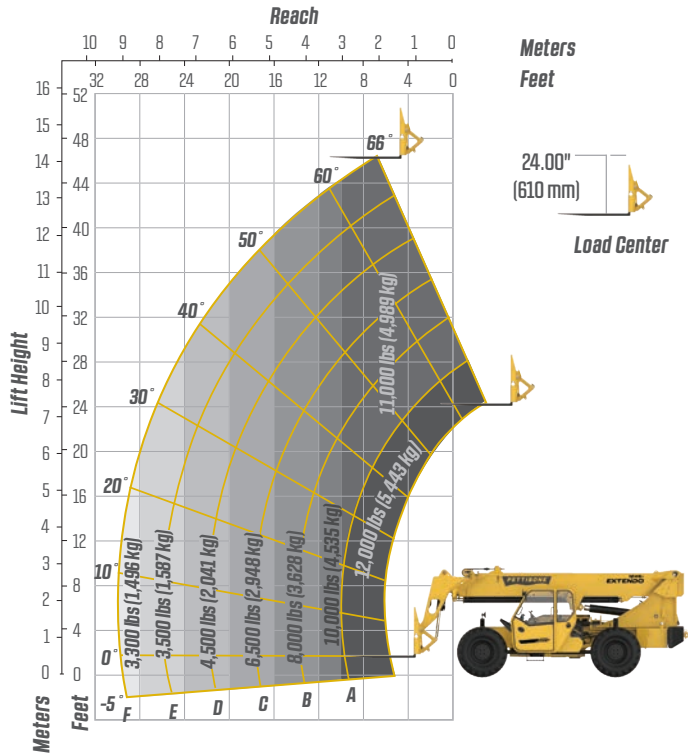
HYDRAULICS

System	Pressure comp, axial piston pump
Features	Fully proportional functions, auxiliary boom tip hydraulics, quick disconnect for attachments
Controls	Single joystick, pilot operated

PERFORMANCE

Max Load Capacity	12,000 lbs (5,443 kg)
Maximum Lift Height	46' 6" (1,417 cm)
Landing Height	42' (1,280 cm)
Maximum Forward Reach	30' (915 cm) at 24" LC
Below Grade Reach	3' 2" (97 cm)
Maximum Travel Speed	15.2 mph (24.5 km/h)
Turning Radius	14' 4" (437 cm)
Drawbar Pull (GVW)	28,600 lbs (12,973 kg)
Frame	24° of leveling (12° right and left), rear axle stabilization system
Transmission	Dana® VDT12000 Series, 3-speed Powershift, forward & reverse
Axles	Dana 223 Series: 4-wheel drive, 45% limited slip front differential
Steering	4 wheel, 2 wheel, and crab steer
Brakes	Oil-immersed inboard disc service brakes, integral front SAHR park brake
Tires	14.00 x 24, 16 ply, G2 tread air-fill standard
Boom	3-section, slide pad; automatic fork leveling without slave cylinder

PRELIMINARY LIFT PERFORMANCE



FEATURES & OPTIONS

OPERATOR CAB

Adjustable suspension seat with seat belt	Split door design
Single multifunction hydraulic joystick	Flat, bolt-in glass
Analog/LCD gauge cluster	Lockable storage area under seat

AVAILABLE ATTACHMENTS

Pallet, lumber or block forks	Standard carriage
Utility bucket	Side-swing carriage (+/- 60°)
Side tilt carriage (+/- 10°)	Hydraulic fork positioning carriage
Truss boom	10' tower w/ standard carriage

OPTIONS

Premium gauge cluster w/7" digital display	Axle mounted outriggers
Rear-view camera system	Enclosed cab, HWD (A/C available)
High output LED lighting package	Sling hook
Solid or foam filled tires	Electrical to boom tip
Various tire tread options available	Bolt-on rear pintle hitch

* Specifications are subject to change.

PETTIBONE®

PETTIBONE, LLC

1100 Superior Avenue
Baraga, MI 49908

P: 800.467.3884
info@gopettibone.com
www.gopettibone.com



1 Year	Full machine and attachment
2 Years	Powertrain and major hydraulic components
3 Years	Machine structure

WARRANTY