

**PETTIBONE®**

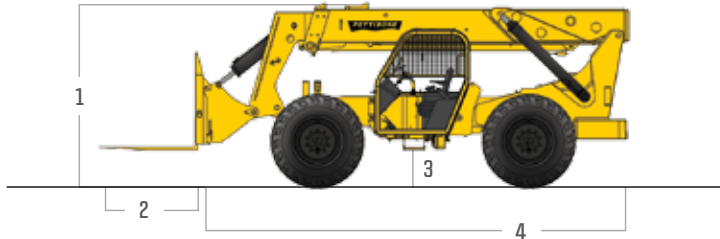
# » 1530 EXTENDO

SPECIFICATIONS



Featuring heavy-duty lift cylinders, automatic fork leveling and rear axle stabilization, the Pettibone® Extendo™ 1530 is built for productive load handling on difficult jobsites. Excellent cab visibility and a rapid-response hydraulic system contribute to maximum efficiency and enhanced safety. Additionally, four-wheel drive and three steering options help provide unmatched maneuverability on the job.

## SPECIFICATIONS

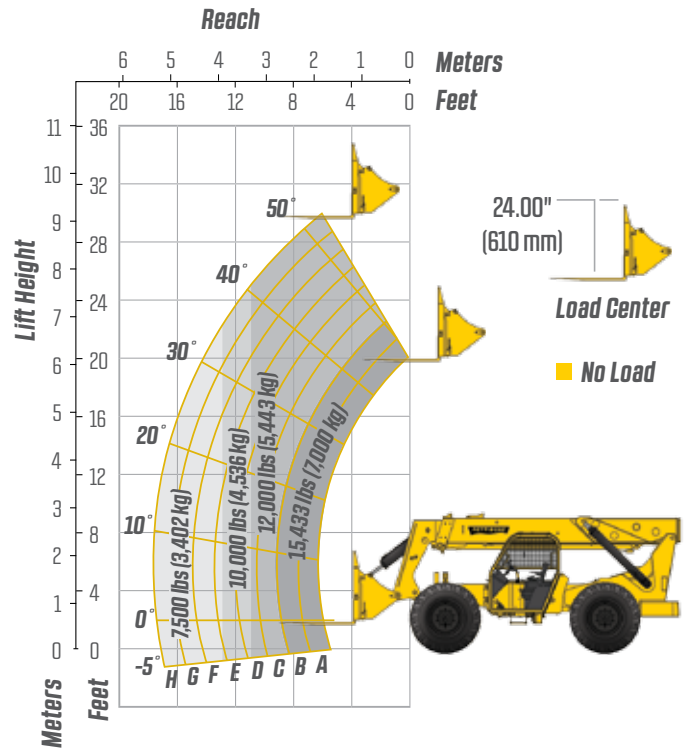


DIMENSIONS		
1	Height	9' 5" (287 cm) boom down
2	Fork Carriage	72" (183 cm) standard
3	Ground Clearance	21" (53 cm)
4	Length	22' 7" (688 cm) to fork frame
	Overall Width	8' 6" (259 cm)
	Pallet Forks	2.25 x 6 x 48"
	Total Operating Weight	31,520 lbs (14,298 kg)
ENGINE		
	Model/Power	130 HP (97 kW) Cummins® Tier III turbo diesel with electronic control & protection
	Fuel Tank	32.5 gal. (123 L)
HYDRAULIC SYSTEM		
	Features	Piston pump, auxiliary boom tip hydraulics, quick disconnect for attachments
	Controls	Single joystick for all boom functions

## FEATURES & OPTIONS

OPERATOR CAB	
Adjustable suspension seat with seat belt Fully adjustable right-side armrest Cab step	Machine level indicator Single multifunction hydraulic joystick ROPS/FOPS
AVAILABLE ATTACHMENTS	
2.25 x 6 x 60" Forks 2.25 x 6 x 72" Forks 2.25 x 6 x 96" Forks	2.00 x 8 x 48" Forks Pipe & pole baler
OPTIONS	
Light packages	Enclosed cab

## LIFT PERFORMANCE



PERFORMANCE	
Max Load Capacity	15,433 lbs (7,000 kg)
Maximum Lift Height	30' (914 cm)
Maximum Forward Reach	17' 5" (531 cm)
Below Grade Reach	15" (38 cm) with boom extended
Maximum Travel Speed	20 mph (32 km/h)
Turning Radius	16' (488 cm)
Frame	20° of leveling (10° right and left); rear axle stabilization system
Transmission	Modulated Dana® Powershift, 4-speed forward & 3-speed reverse with declutch
Axles	Dana outboard planetary; 4-wheel drive
Steering	4 wheel, 2 wheel, and crab steer
Brakes	Oil-immersed inboard disc service brakes, integral park brake
Tires	16.00 x 24, 16 ply
Boom	Automatic fork leveling without slave cylinders; 2 wide stance, heavy-duty lift cylinders

\* Specifications are subject to change.

**PETTIBONE®**

### PETTIBONE, LLC

1100 Superior Avenue  
Baraga, MI 49908

P: 800.467.3884  
info@gopettibone.com  
www.gopettibone.com

**1 - 2 - 3  
WARRANTY**

WARRANTY	Details
1 Year	Full machine and attachment
2 Years	Powertrain and major hydraulic components
3 Years	Machine structure