

**PETTIBONE®**

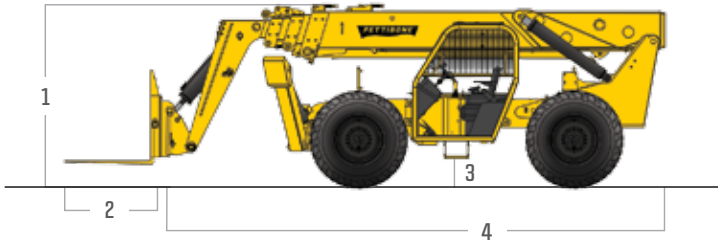
# » 1157 EXTENDO

SPECIFICATIONS



Featuring heavy-duty lift cylinders and other rugged components, the Pettibone Extendo 1157 is designed to move loads on the toughest jobsites. Superior reach, lift capacity and maneuverability combine to make the 1157 one of the most productive telehandlers on the market. Furthermore, incredible visibility from the cab and a responsive hydraulics system allow operators to work safely and efficiently at all times.

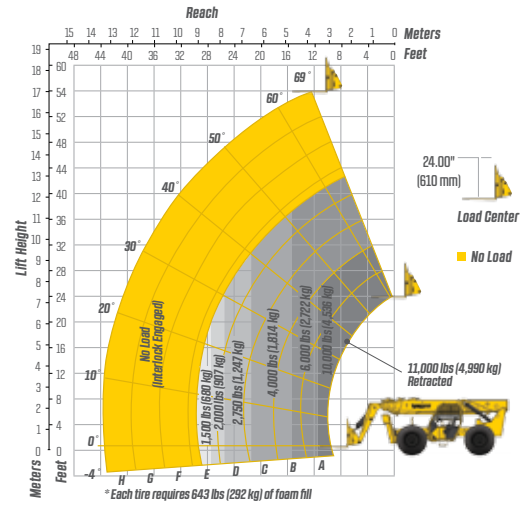
# SPECIFICATIONS



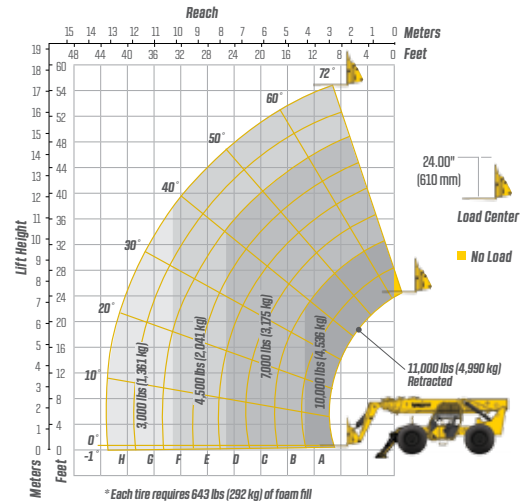
DIMENSIONS		
1	Height	8' (244 cm) boom down
2	Fork Carriage	48" (122 cm) standard
3	Ground Clearance	18.8" (48 cm)
4	Length	24' 5" (744 cm) to fork frame
	Overall Width	8' 6" (259 cm)
	Pallet Forks	2.25x4x48" standard
	Total Operating Weight	35,000 lbs (15,876 kg)
ENGINE		
	Model/Power	110 HP (82 kW) Cummins Tier III turbo diesel with electronic control & protection
	Fuel Tank	32.6 gal. (123.4 L)
HYDRAULIC SYSTEM		
	System	Rapid response hydraulic
	Features	Piston pump, auxiliary boom tip hydraulics, quick disconnect for attachments
	Controls	Single joystick for all boom functions
PERFORMANCE		
	Max Load Capacity	11,000 lbs (4,990 kg)
	Maximum Lift Height	57' (1,737 cm)
	Maximum Forward Reach	42' 1" (1,283 cm) at 24" LC
	Below Grade Reach	3' 11" (119 cm)
	Maximum Travel Speed	20 mph (32 km/h)
	Turning Radius	12' 6" (381 cm)
	Frame	24° of leveling (12° right and left); rear axle stabilization system; fits under 8' doorway, outriggers
	Transmission	Fully modulated Carraro Powershift, 4-speed forward & reverse; parking brake engaged transmission declutch
	Axles	Carraro outboard planetary; 4-wheel drive
	Steering	4 wheel, 2 wheel, and crab steer
	Brakes	Oil-immersed inboard disc service brakes, integral park brake
	Tires	14.00 x 24, 16 ply foam filled
	Boom	Automatic fork leveling with 0 slave cylinders; 2 wide stance, heavy-duty lift cylinders

# LIFT PERFORMANCE

Standard Fork Frame



Standard Fork Frame (Outriggers Down)



# FEATURES & OPTIONS

OPERATOR CAB		
Unmatched visibility	Adjustable suspension seat with seat belt	Fully adjustable right-side armrest
		Full set of gauges for instant machine status
AVAILABLE ATTACHMENTS		
Pallet, lumber and block forks	Side tilt carriages +/- 10°	Truss boom
Side-swing carriage		Utility buckets
OPTIONS		
Light packages	Enclosed cab (HWD)	Air-conditioned cab

\* Specifications are subject to change.



**PETTIBONE, LLC**  
 1100 Superior Avenue  
 Baraga, MI 49908  
 P: 800.467.3884  
 info@gopettibone.com  
 www.gopettibone.com



1 Year	Full machine and attachment
2 Years	Powertrain and major hydraulic components
3 Years	Machine structure